

Manual



Read, observe and follow this manual and the other applicable documents, especially all safety instructions and warnings. Keep the manual for future consultation.



Always wear protective gloves!

Double lock hand seamer K7-1

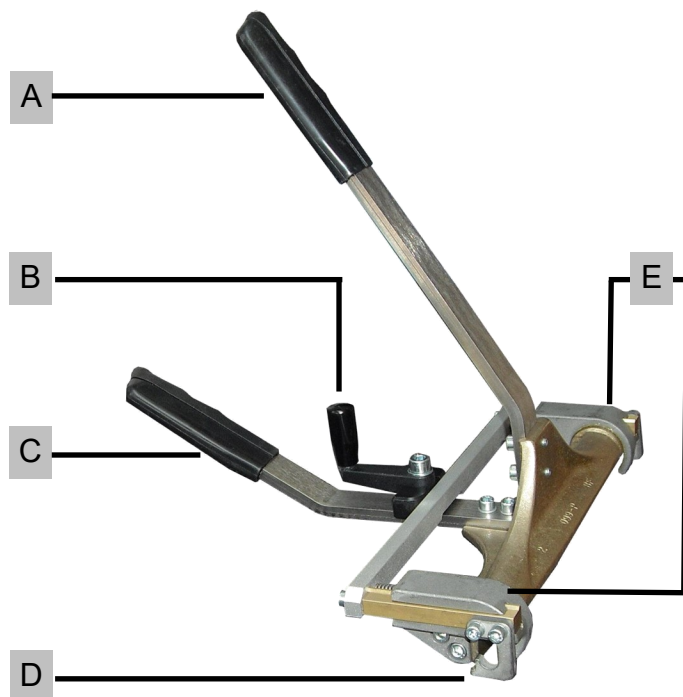


<i>Item no.:</i>	<i>Seam height</i>	<i>Closing length</i>	<i>Length</i>	<i>Width</i>	<i>Weight</i>
91515-1	from 25 mm/1"	210 mm	310 mm	320-610 mm	3,3 kg



Manual

1. Tool elements



A	Closing handle
B	Eccentric lever
C	Apply handle
D	Clamping hooks
E	Side guides (L+R)

2. Intended use

The K7-1 double lock hand seamer can only be used to manually close of the pre-closed standing seam to a double standing seam in the material thicknesses mentioned under point 3.

3. Max. thickness of materials

Copper / Zinc / Aluminium until 0,80 mm

Steel until 0,80 mm

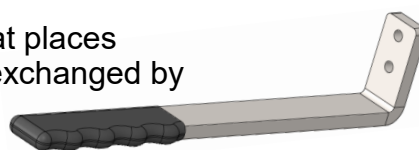
Stainless steel until 0,50 mm

4. Maintenance

All parts of the hand seamer are standardized, exchangeable, made of rustproof materials and thus largely maintenance-free. The two side guides (E) should be lubricated with grease periodically.

5. Accessories and additional tools

If it is difficult to use the hand seamer K8 in hard to get at places (e.g. chimney-windows etc.) the closing handle can be exchanged by a 90° closing handle, item no. (Item No.: BGKH70008)



The hand seamer K8-1 closes pre-profiled panels in one operation to a standing seam and a tight joint. (Item No.: 91520)

6. Operation method

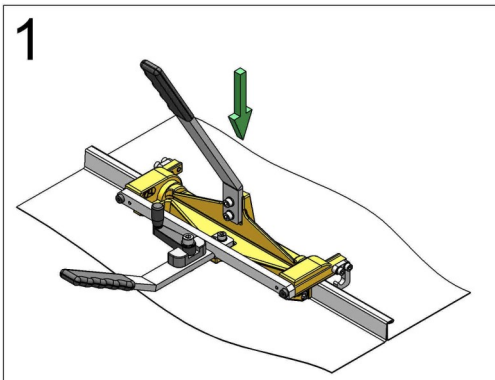


Fig. 1:

Starting position:

Eccentric lever in "OPEN" position (parallel to seam) and closing handle in open position.

Place the K7-1 like here shown on the seam.

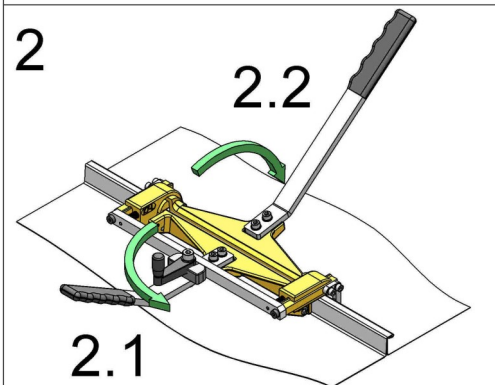
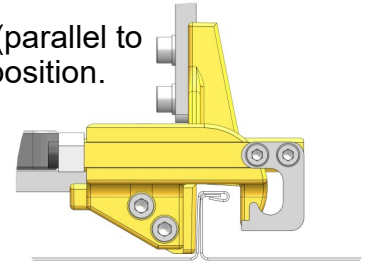


Fig. 2:

2.1 Eccentric lever in "CLOSED" position (parallel to Apply handle) so that both clamping hooks are locked under the standing seam.

2.2 Counter-press the apply handle and press down the closing handle.

The double lock seam is closed.

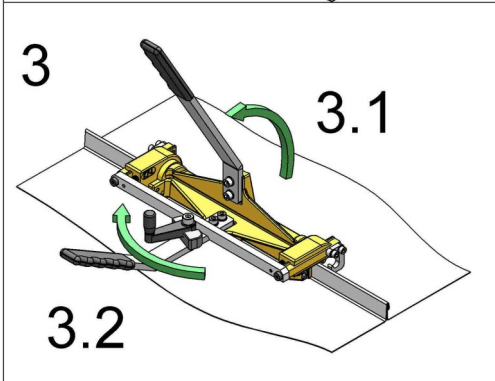
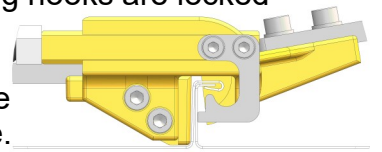


Fig. 3:

3.1 Closing handle back in starting position.

3.2 Tap and hold the eccentric lever with your thumb. This releases the clamping hooks.

Important: It is irrelevant whether the eccentric lever is pressed to the left or to the right and a little pressure sideways is enough to be able to move the tool.

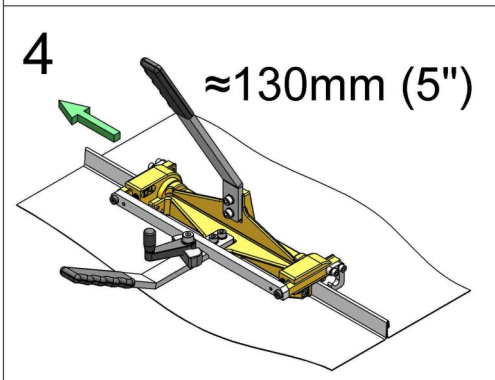
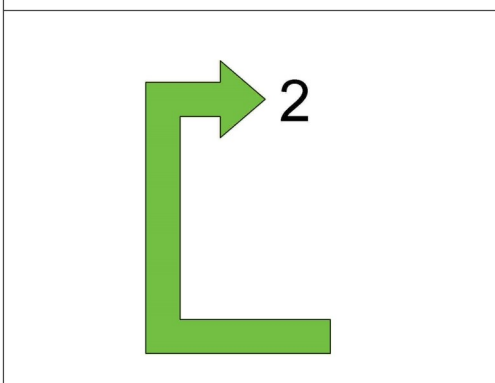


Fig. 4:

slightly lift and move the tool by approx. 1/2 to 3/4 of the tool width.



Repeat locking process, start over at Fig. 2.



Video: K7-1 + K8

