

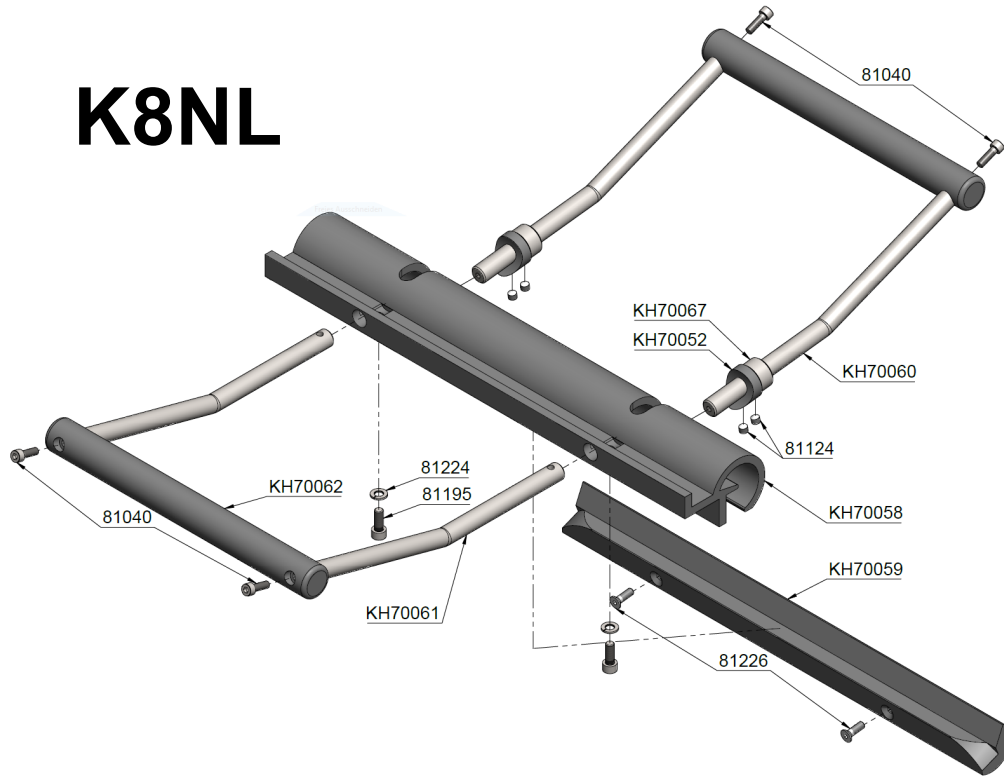


Read, observe and follow this manual and the other applicable documents, especially all safety instructions and warnings.



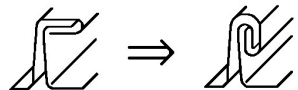
Always wear protective gloves!

Standing seam closers K5, K8N, K8NL



6. Additional tools

To close the double lock seam you need the double lock hand seamer **K7-1**. The K7-1 closes the pre-closed standing seam into a double lock seam in one operation, item no.: 91515-1.



Type	Item no.	Closing length	Length	Width	Weight
K5	91505	70 mm	120 mm	260-430 mm	1,0 kg
K8N	91530	200 mm	250 mm	260-430 mm	2,1 kg
K8NL	91535	350 mm	400 mm	310-530 mm	3,1 kg

Special lengths available on request.

Manual

1. Intended use

The standing seam closers can only be used to manually close pre-profiled panels in the material thicknesses mentioned under point 2.

2. Max. thickness of materials

Copper / Zinc / Aluminum	until 0,80 mm
Steel	until 0,80 mm
Stainless steel	until 0,50 mm

3. Operation method

The hand seamer closes pre-profiled panels in one operation to a standing seam and a tight joint.

- 1) Open hand seamer.
- 2) Now place seamer in open position on the seam with the fixed pivot close against the U-Panel (over cloak).
- 3) Press the closing handle down completely. The seam is now closed.
- 4) Open up seamer by moving closing handle back to open position, slightly lift and move the tool by approx. $\frac{3}{4}$ of the tool width and repeat the locking process.

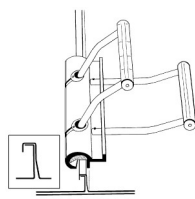


Fig. open position

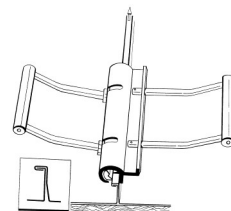


Fig. Closing handle down

4. Maintenance

All parts of the hand seamers are standardized, exchangeable, made of rustproof materials and thus largely maintenance-free. Nevertheless, it is recommended to clean the seamer from time to time. Disassemble tool, clean the hinged parts and reassemble. This extends the life of the seamer and only takes a few minutes.

5. Tool elements

