

# Manual



Congratulations on the purchase of your double lock seamer.  
These instructions will help you to use the device safely & effectively!



Read, observe and follow this manual and the other applicable documents, especially all safety instructions and warnings. Keep the manual for future consultation.



Always wear protective gloves!

## Double lock hand seamer K7 & K7S1



**K7**

**K7S1**

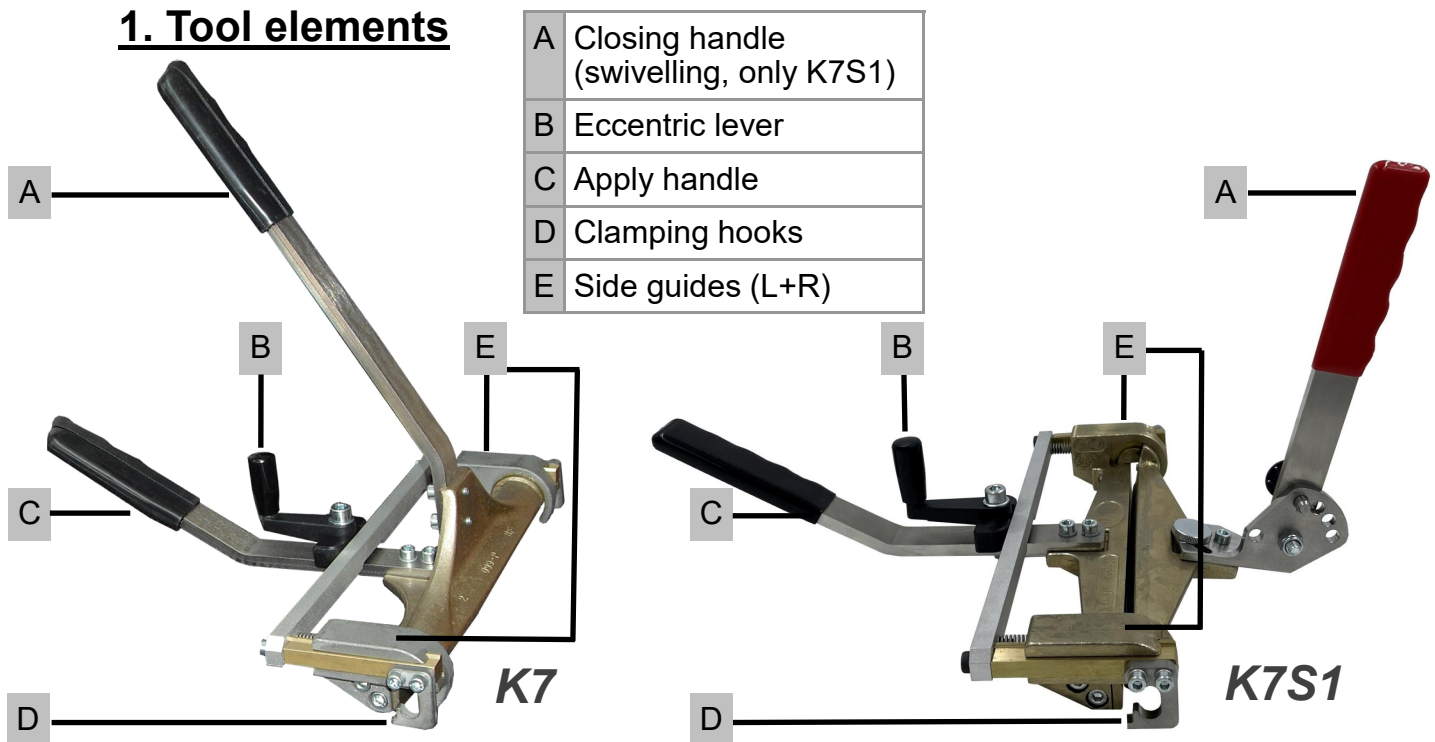
*with swivelling lever*

<b>Item no.:</b>	<b>Seam height</b>	<b>Closing length</b>	<b>Length</b>	<b>Width</b>	<b>Weight</b>
91515-1	from 25 mm/1"	210 mm	310 mm	320-610 mm	3,08 kg
91515-1S1	from 25 mm/1"	210 mm	310 mm	320-610 mm	3,04 kg



# Manual

## 1. Tool elements



## 2. Intended use

The K7 & K7S1 double lock hand seamer can only be used to manually close of the pre-closed standing seam to a double standing seam in the material thicknesses mentioned under point 3.

## 3. Max. thickness of materials

Copper / Zinc / Aluminium until 0,80 mm  
Steel until 0,80 mm  
Stainless steel until 0,50 mm

## 4. Maintenance

All parts of the hand seamer are standardized, exchangeable, made of rustproof materials and thus largely maintenance-free. The two side guides (E) should be lubricated with grease periodically.

## 5. Swivelling lever BGKH70070 (only K7S1!)

The locking pin KH70072 (see exploded view under point 7) is used to adjust the lever to the desired angle so that obstacles do not affect the closing process and the seam is closed neatly. The knurled screw KH70073 is used to turn the lever to the side for even more ergonomic/space-saving working.



Possible adjustments  
BGKH70070

## 6. Accessories and additional tools

The hand seamer K8 (#91520) & K8S1 (#91520S1, with swivelling lever) closes pre-profiled panels in one operation to a standing seam and a tight joint.

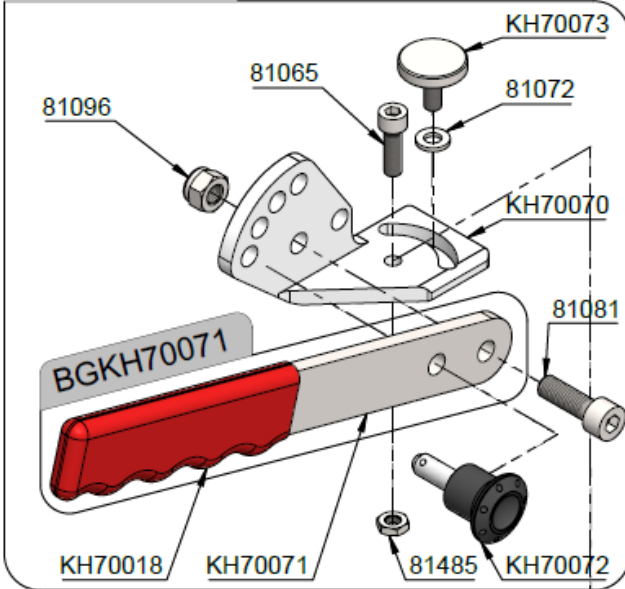
The swivelling lever #BGKH70070 can also be retrofitted to the K6, K8 and K7.



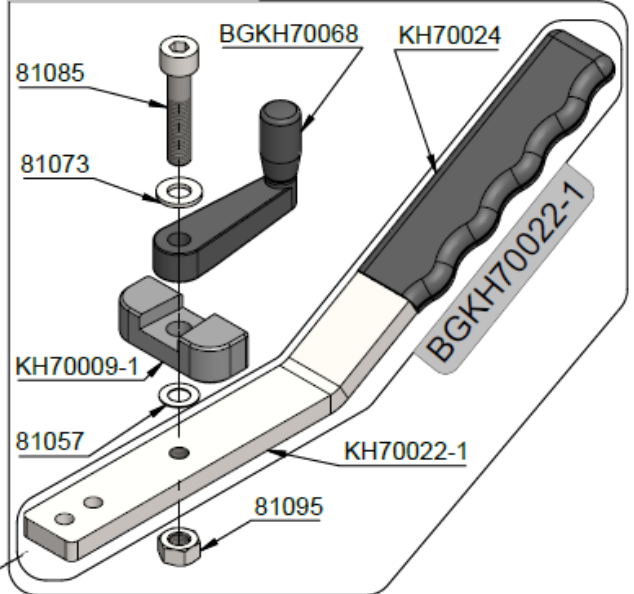
## 7. Spare parts

### **K7 (lever BGKH70025) & K7S1 (swivelling lever BGKH70070)**

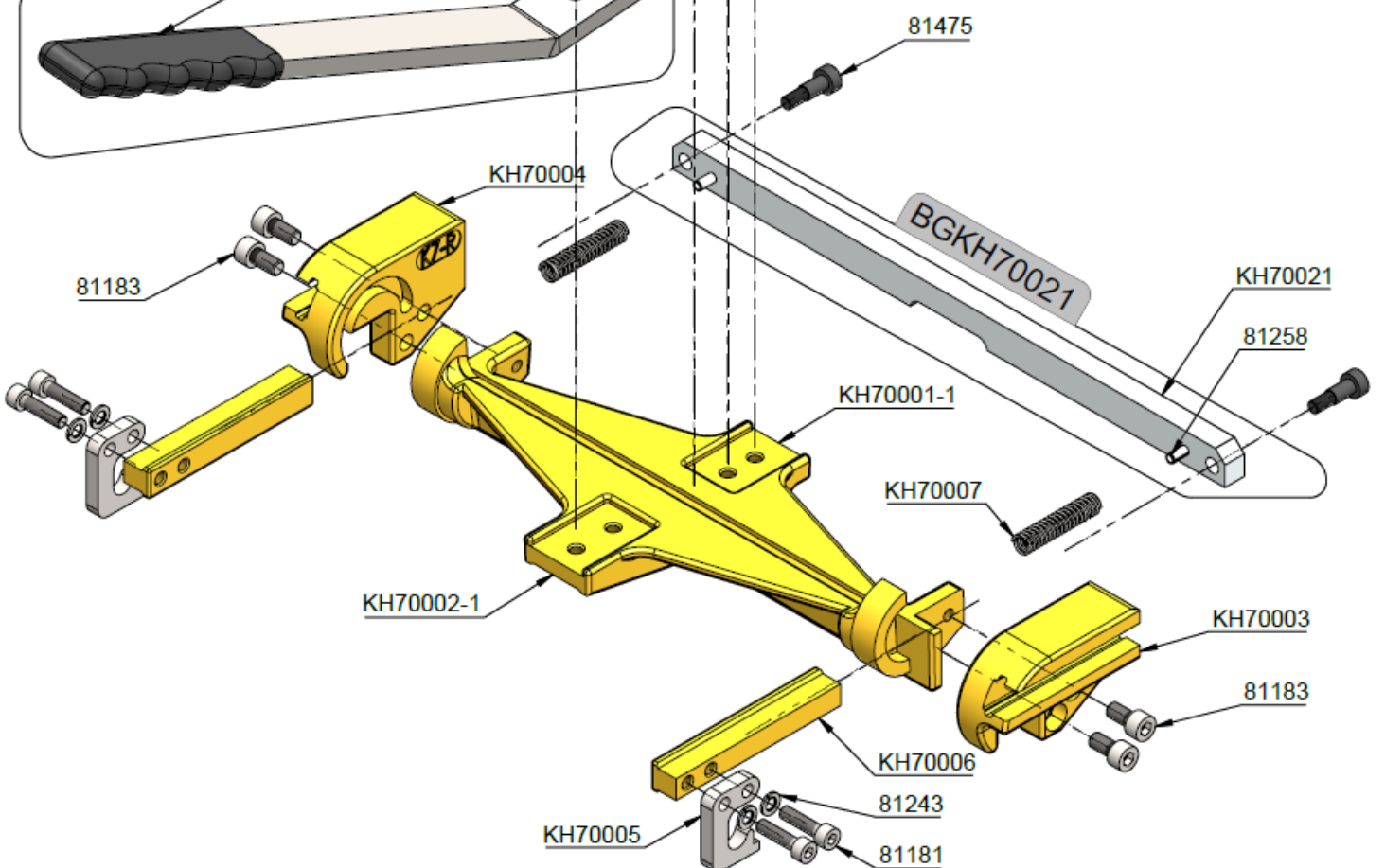
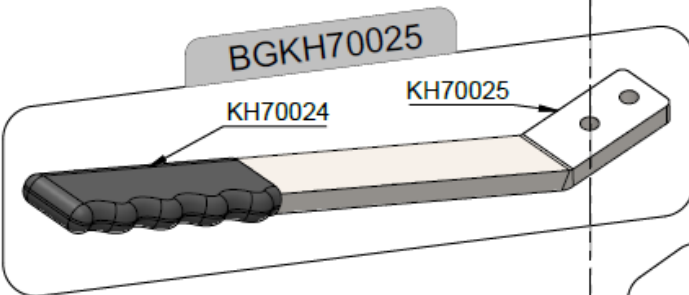
BGKH70070



BGKH70009-1



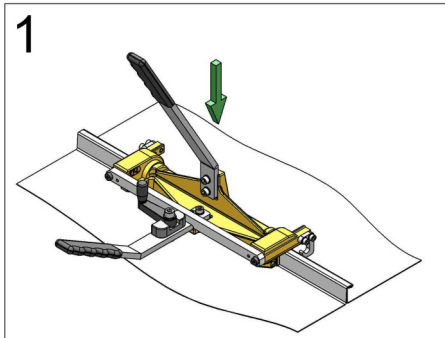
**BGKH70025** ↔ **BGKH70070**



# Manual



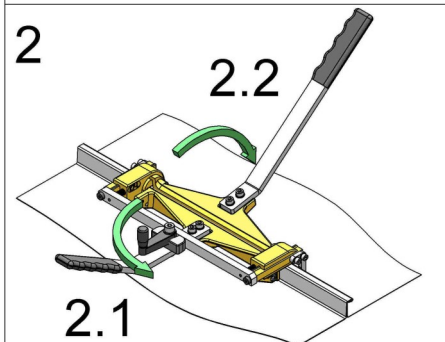
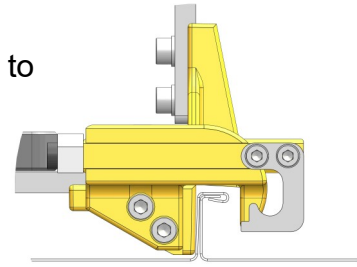
## 8. Operation method



**Fig. 1:**

Starting position:  
Eccentric lever in "OPEN" position (parallel to seam) and closing handle in open position.

Place the K7-1 like here shown on the seam.

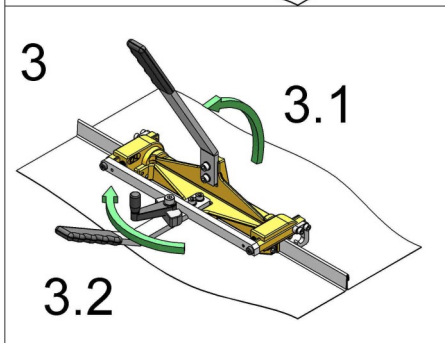
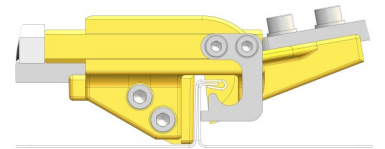


**Fig. 2:**

2.1 Eccentric lever in "CLOSED" position (parallel to Apply handle) so that both clamping hooks are locked under the standing seam.

2.2 Counter-press the apply handle and press down the closing handle.

The double lock seam is closed.

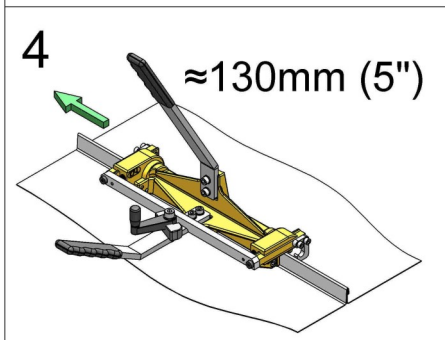


**Fig. 3:**

3.1 Closing handle back in starting position.

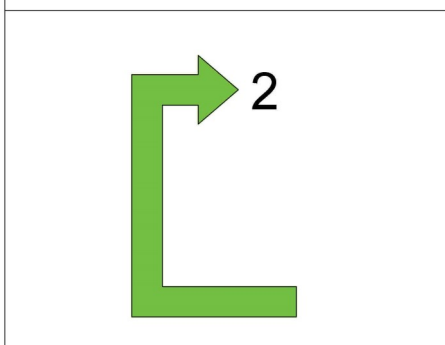
3.2 Tap and hold the eccentric lever with your thumb. This releases the clamping hooks.

Important: It is irrelevant whether the eccentric lever is pressed to the left or to the right and a little pressure sideways is enough to be able to move the tool.



**Fig. 4:**

slightly lift and move the tool by approx. 1/2 to 3/4 of the tool width.



Repeat locking process, start over at Fig. 2.

Your dealer:

